

# Configuring School Workstations for the AnyWhere Learning System® Browser Software (ALS)

For users accessing the AnyWhere Learning System (ALS) software through a web browser, their browsers, proxy server, and content filters must be configured appropriately. This document lists the browser settings, plug-ins, and allowed websites required in order for the student to have a smooth lesson experience.

Many schools limit the network rights of students and teachers so that changing Internet browser settings are not possible, or they use software that prevents changes from being made permanently. We HIGHLY RECOMMEND that a school's network administrator or IT staff make the following adjustments permanent, so that these settings will always be in effect whenever a teacher, student, or administrator logs on to the workstation.

## Supported Browsers

Windows Internet Explorer® 8.0 or 9.0

Mac Latest updated version of Safari on OS X 10.5 or greater

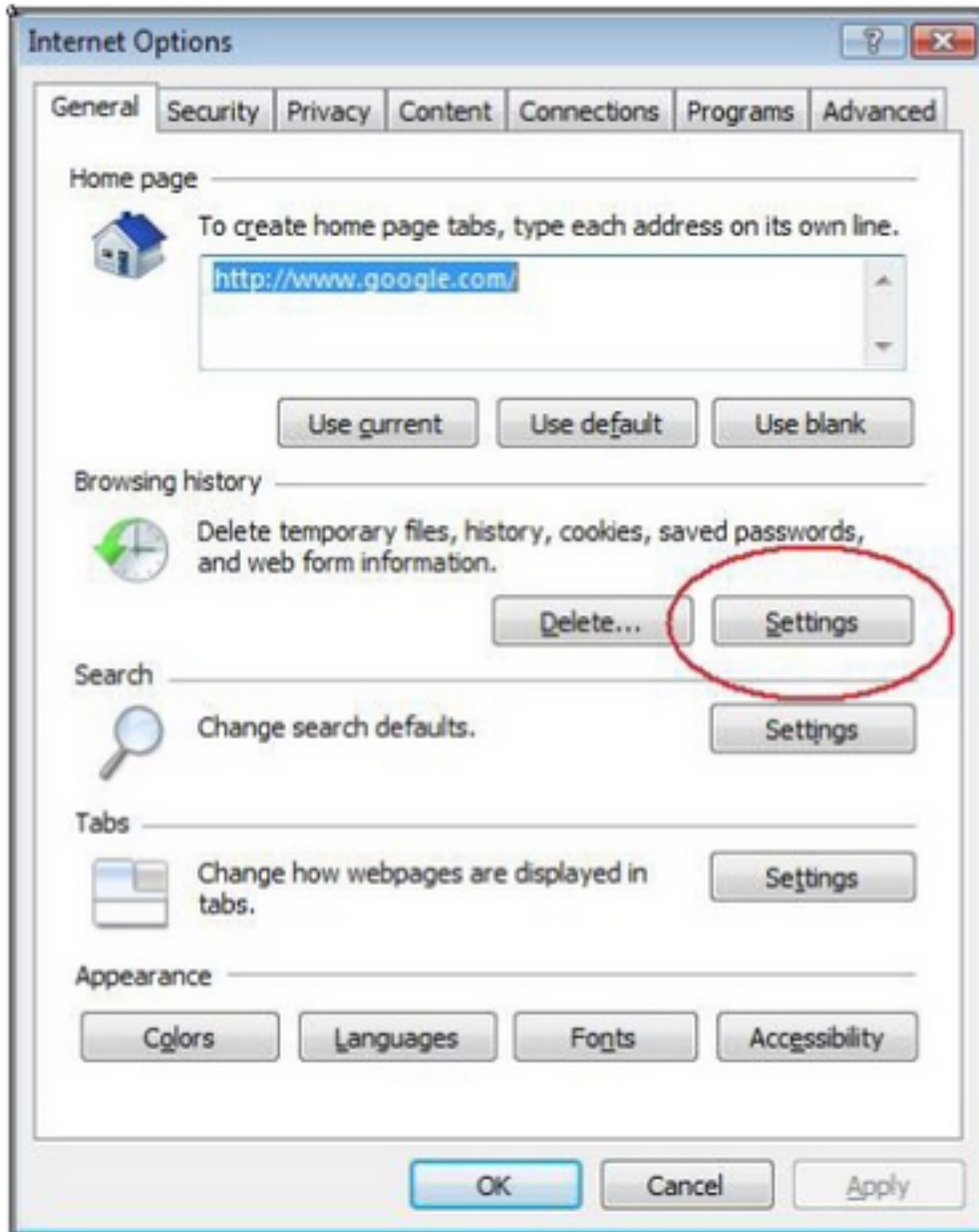
(no settings changes required for Safari).

## Cache Settings

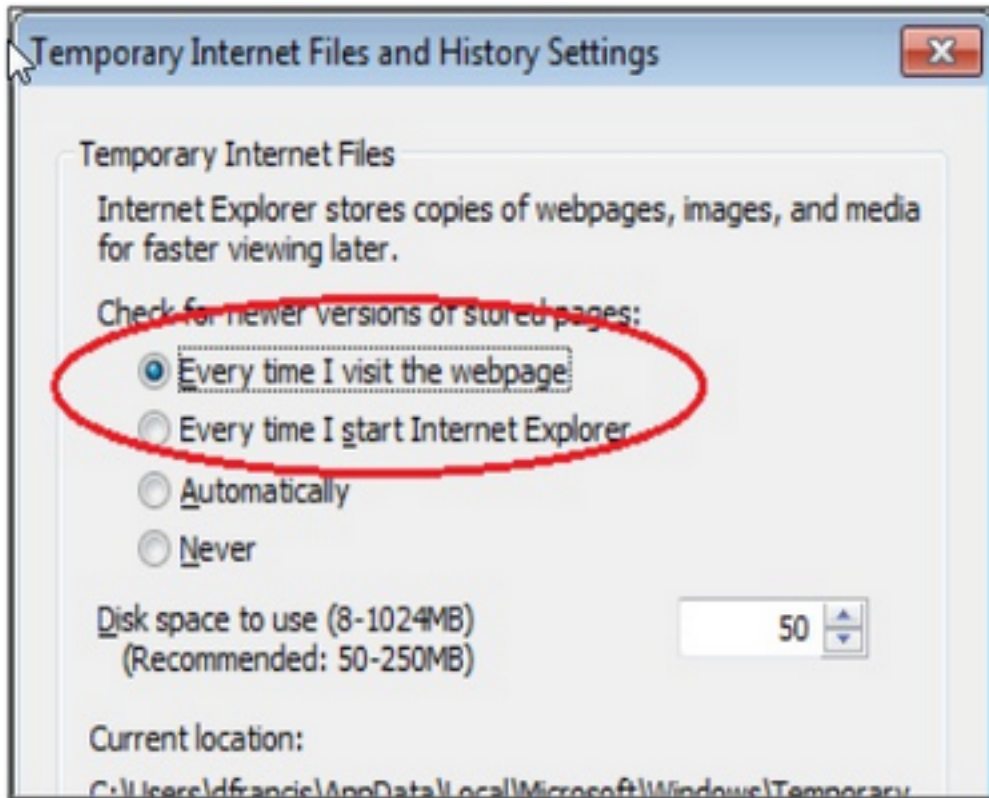
**WARNING:** Internet Explorer MUST be set to NOT cache (save) A+LS web pages on the workstation.

Caching of ALS pages is the #1 reason students may have trouble accessing lessons. Please follow the steps below to properly configure Internet Explorer cache settings for each workstation.

1. Launch **Internet Explorer**.
2. From the Internet Explorer menu bar at the top of the window, select **Tools**, then **Internet options**. If the menu bar doesn't appear, press the [Alt] key and the menu should appear.
3. In the **Internet Options** window, select the **General** tab.
4. On the **General** tab, under **Browsing history**, click the **Settings** button.



5. In the **Temporary Internet Files and History Settings** window (see figure at right), make sure that **Check for newer versions of stored pages** is set to **Every time I visit the webpage**.



6. Click **OK** when finished.

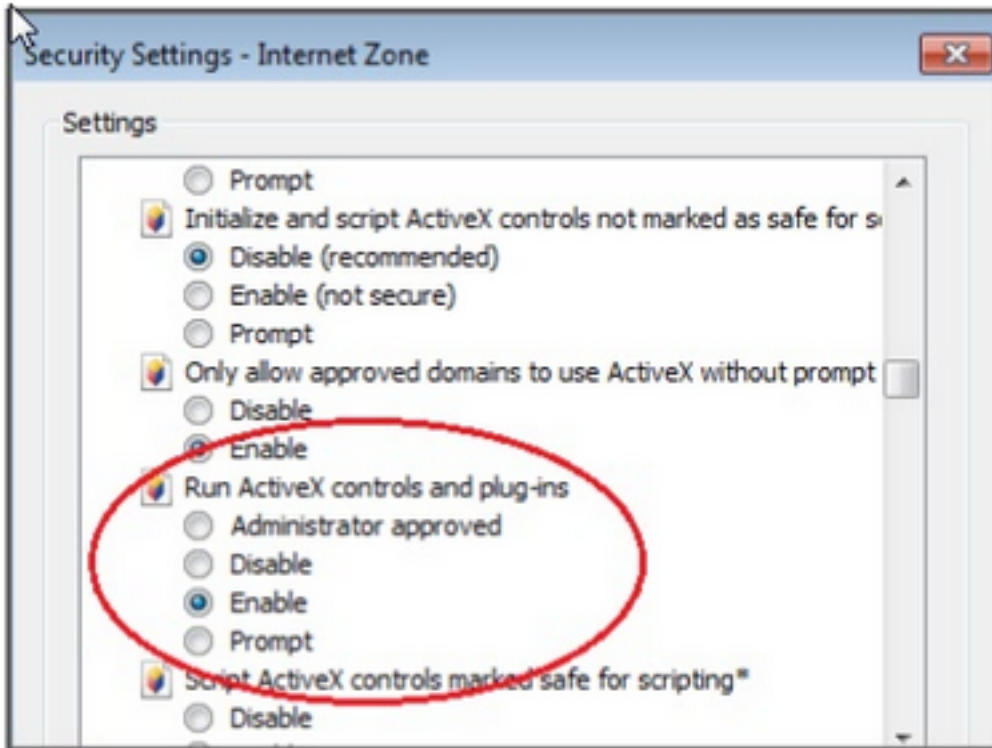
### **Security Settings**

The default security settings in Internet Explorer (set to Medium-High by default) should allow A+LS to operate error-free, with no changes required.

To confirm your security setting, on the menu bar select **Tools / Internet** options, then the **Security** tab.

If you require a higher security setting in Internet Explorer than what it defaults to, then you should follow the next instructions to customize your security settings.

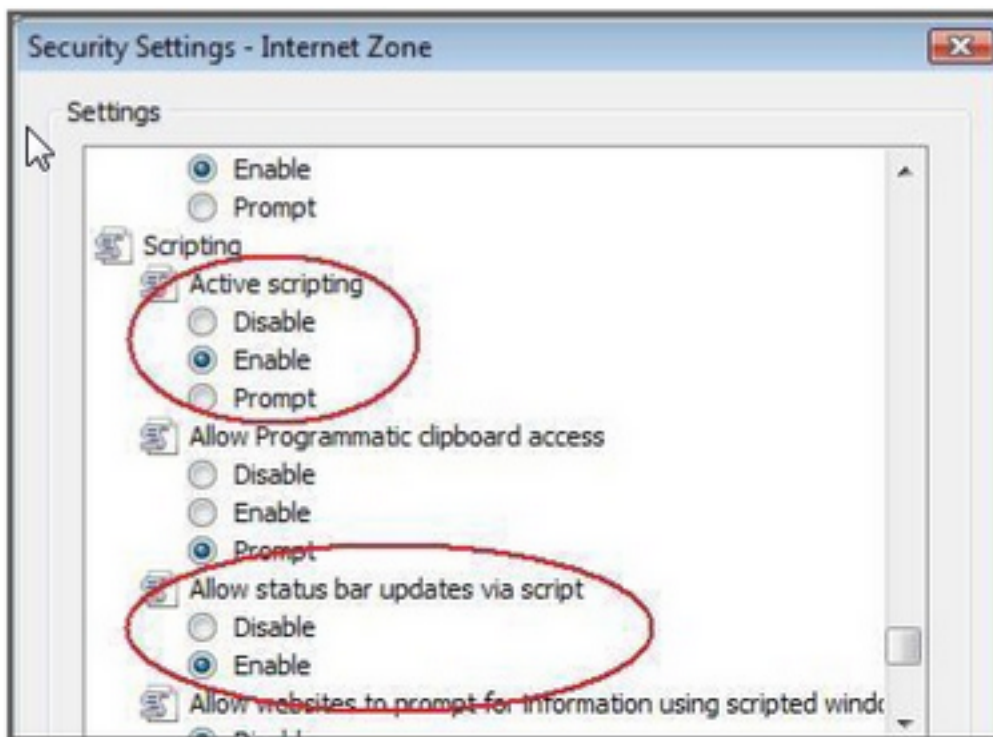
1. Click on the **Security** tab, then click the button labeled **Custom Level**.
2. Scroll down until you see the section heading titled **Active X Controls and Plugins**.
3. Scroll down a bit further until you find the setting labeled **Run ActiveX Controls and plug-ins** and make sure it is set to **Enable**.



4. Scroll down until you find the section heading labeled **Scripting** (it's almost all the way at the bottom).

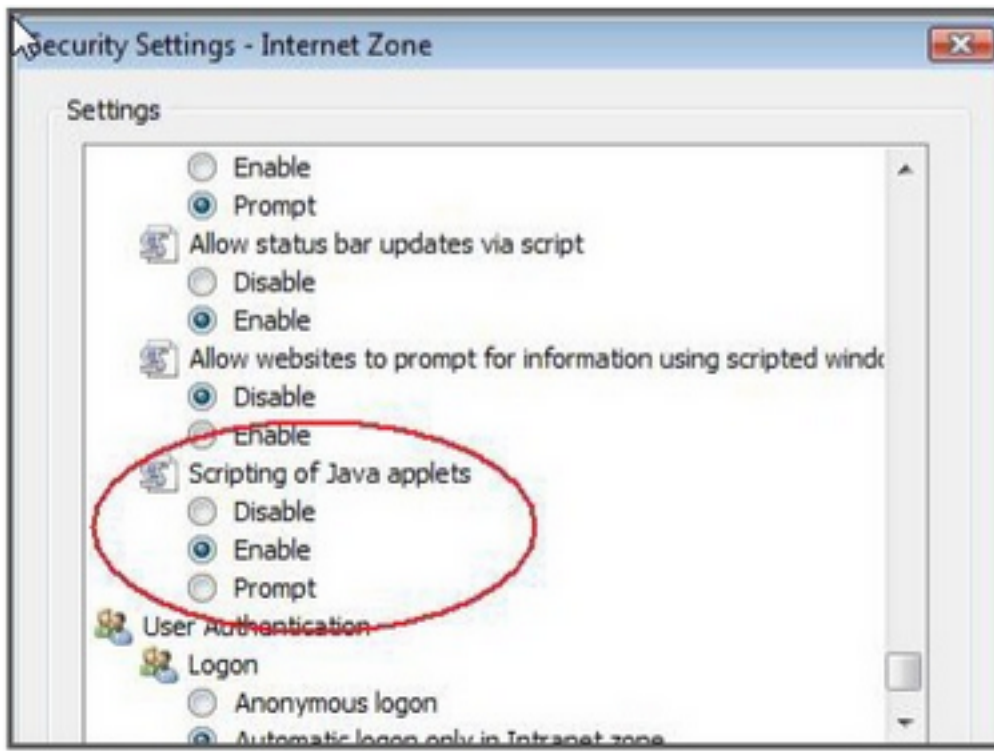
5. Find the setting labeled Active scripting and set it to Enable.

6. Below that, find the setting labeled **Allow status bar updates via script** and set it to **Enable** (see figure at right). Don't click **OK** quite yet, there is one more setting to change.



7. Scroll down slightly until you see the setting labeled **Scripting of Java applets** and set it to **Enable**(see figure at right).

8. Click **OK** when finished.



### **The Adobe® Flash® Plug-in**

Some lessons in ALS use the Flash plug-in to deliver instructional content to the user. Adobe Flash 10.2 or greater is required in order to view this content. To see if the Flash plug-in is currently installed on the computer's web browser, and install it if needed, go to: <http://helpx.adobe.com/flash-player.html>

### **Adobe Acrobat® Reader**

A reasonably current version of Adobe Reader is required to view embedded .PDF files (documents) in some lessons. It is available at: <http://get.adobe.com/reader>